



# HERMESWEG 7

## HOUSE FOR SALE



On the edge of Mahaai  
**In the Heart of Cas Cora**

This spacious family home offers a tropical ambiance and scenic hillside views over the neighborhood. Perfectly situated on the wind, this property is designed with both upper and lower levels, featuring a separate apartment, a pool and a generous garden.

# Layout House

The house is situated on a hill and consists of an upper and lower section. The upper section features an impressive staircase, front porch, and entrance. Here, you enter the main house, which includes a spacious living room with an open kitchen, 3 bedrooms and 2 bathrooms. The living room also opens onto a large covered backporch.



## The Back Terrace

The backyard features an elevated terrace and a lower section connected by a staircase. The upper area is a charming spot where you can lounge under the palapa, while the lower section includes a pool and wooden pool deck, perfect for sunset swims.



## Apartment Design

Below, you'll find the spacious apartment with its own private entrance. It is laid out with a living room, bedroom, walk-in closet, and bathroom. A covered terrace in front of the apartment offers views of the garden.



### 5 bedrooms

The house has 3 rooms in upper level and 2 in lower level. The 5th room situated next to the pool has its own entrance and can be used as office space, hobby room or extra bedroom.



### 3 Parking Spots

Large front gate consisting of 2 parts with access to three parking spots side by side with automatic gate.



### 3 Bathrooms

In the main house, there are two modern-style bathrooms with warm water. The apartment also has one next to the bedroom.



### Pool Area

There is a 6x4 meter pool surrounded by a pool deck and terrace.



## TROPICAL STYLE

Open tropical house with elegant hardwood windows, designed to catch the breeze. The front and back of the living room can be opened, allowing airflow throughout the home.



## OPEN STRUCTURE

Spacious back porch with an elevated terrace overlooking the pool area, perfect for garden lovers. Ideal for outdoor living and enjoying a seamless connection to nature.



### Automatic gate

The large gate to the parking area is an automatic gate. It operates via remote controls in your car, allowing you to open the gate.



### Groundwater pump

Groundwater pump allows for easy access to costless water, making it convenient to irrigate the garden and fill the pool and maintain a tropical garden.



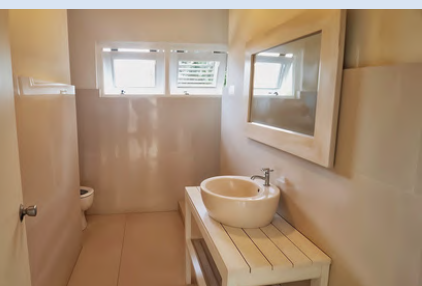
### Palapa

The garden features a palapa that serves as a serene lounge area, perfect for relaxing and unwinding in a tropical paradise.

# OUTDOOR LIVING

The terrace features a palapa for lounging, with plenty of trees in the garden providing shaded spots. Two staircases around the house connect the different levels seamlessly.







## Details & Specifics

### Asking Price:

ANG 770.000 (excl. closing costs)

### Plot Area:

Approximately 825 m2 (private land)

### Build size:

Approximately 225 m2 (excluding terrace)

#### Living room:

9 x 5.5 m

#### Back porch:

7.7 x 4 m

#### Open Kitchen:

4 x 3 m

#### Terrace:

7 x 6 m

#### Front porch:

5.6 x 3 m

#### Pool:

6 x 4 m



## CONTACT

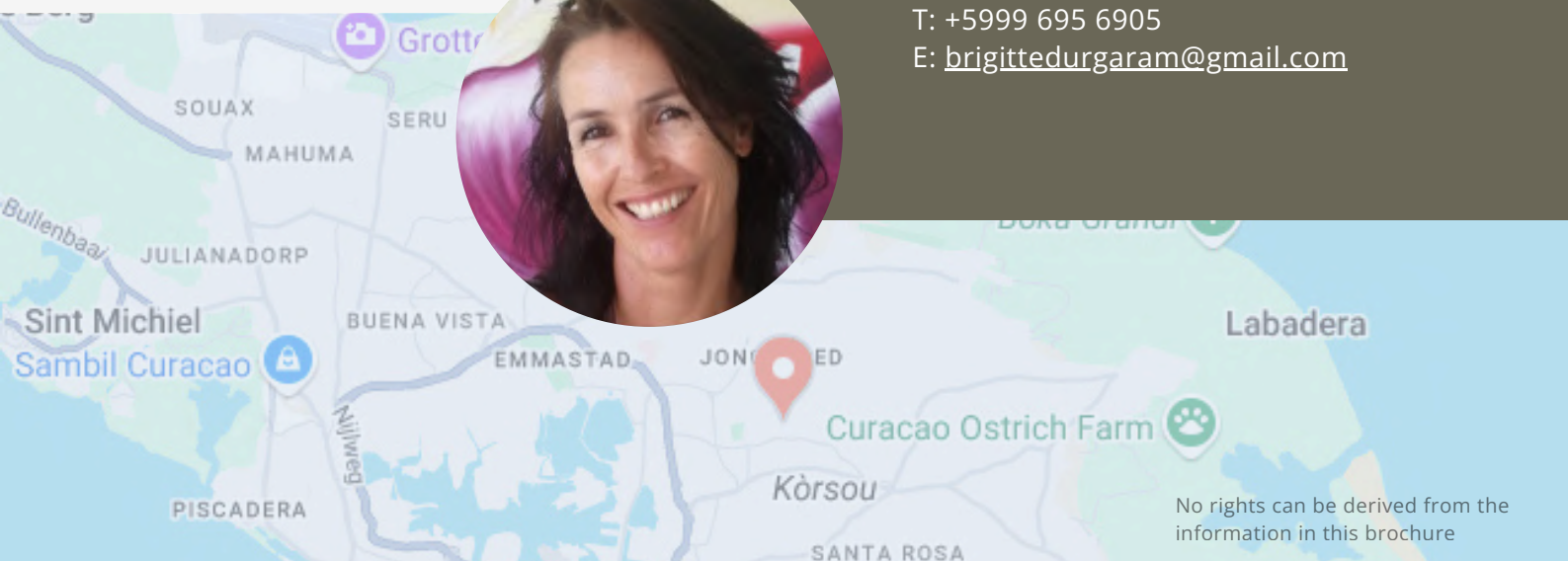
If you would like to know more or have any questions about the house, feel free to contact me. I'll be happy to provide you with the necessary information.

### Brigitte Moerkens

House owner

T: +5999 695 6905

E: [brigittedurgaram@gmail.com](mailto:brigittedurgaram@gmail.com)



No rights can be derived from the information in this brochure